

HELD ON ARSON CHARGE**Police Say Wilson Barnard Admits Setting House Afire**

Wilson Barnard, a farmer of Bryn Mawr, was arrested late yesterday by Sergeant Relchner, of the Lower Merion police, charged with arson. Barnard leases a farm on the Catherine B. Morris estate, Roberts road and Morris avenue, Bryn Mawr. He was held without bail by Magistrate Stillwagon, at Ardmore.

Barnard, according to Sergeant Relchner and Magistrate Stillwagon, admitted he set fire to a tenant house he owned on March 6. He explained he was ordered to move the house off the ground by April 1, and, having no place to take it, decided to burn it down. The fact there was \$1,200 insurance on the property caused the police to investigate.

Fire last fall destroyed a barn on the Morris estate with a loss of \$10,000. There was a report wires had been found stretched across the barn door but police found no evidence of that.

The Philadelphia Inquirer

Sun, Nov 13, 1910 - Page 11

Milk Dealer Sues School

Special to The Inquirer.

NORRISTOWN, Pa., Nov. 12.—Wilson Barnard, a Main Line milk dealer, brought suit here against the Misses Shipley, who conduct a preparatory school at Bryn Mawr. Barnard claims that they owe him \$257.40 for breach of contract. He says that he was to serve them with milk and cream for a year, but was required to discontinue after seven months.

Wilson Barnard b approx. 1863

- rented Roberts Rd from the Catherine Wistar Morris Estate
- was a known dog breeder – Devonshire Kennels
- Lived in Bryn Mawr until at some point in the late 1920's, then moved to Sellersville

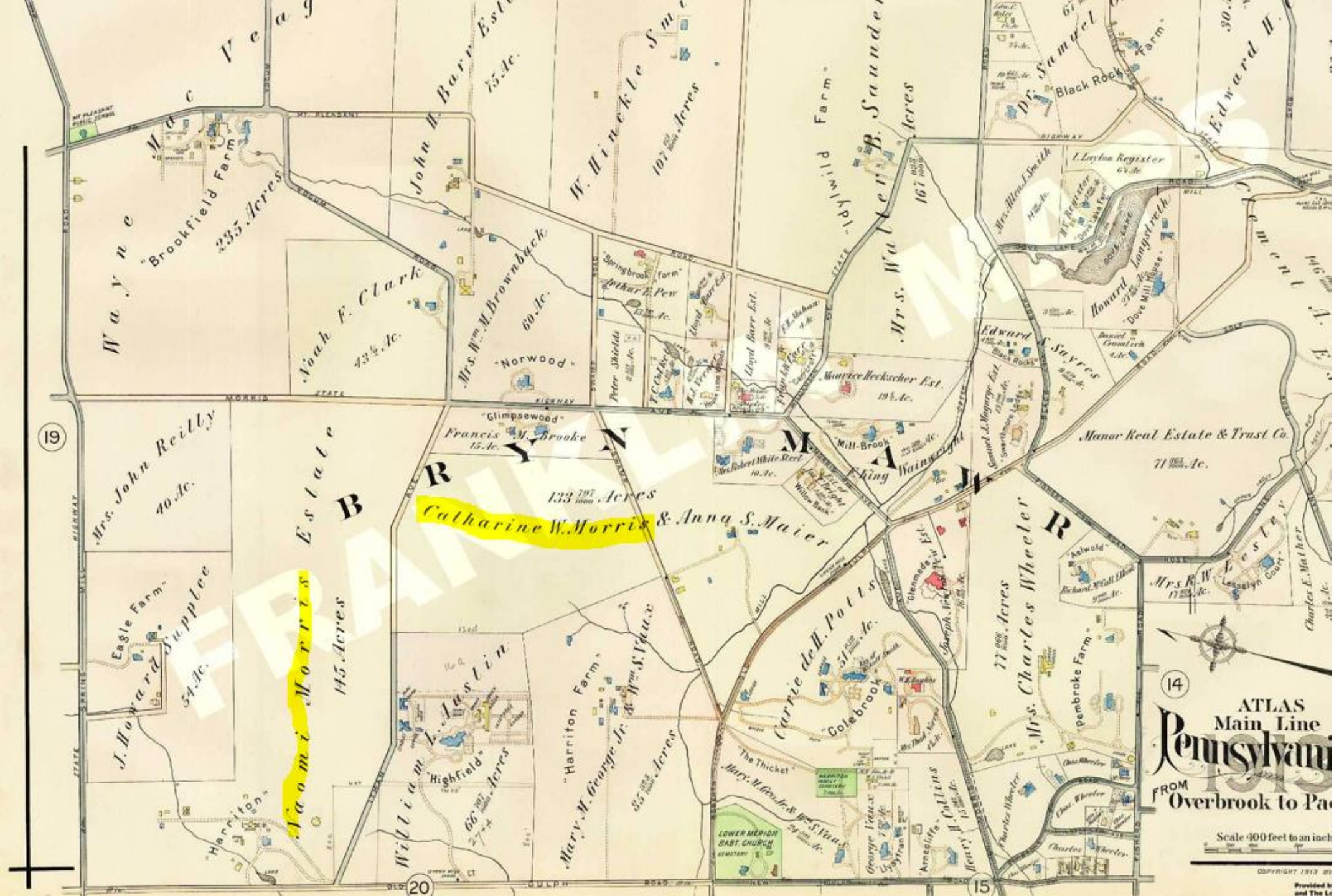
Catherine Wistar Morris d 1922

- Buried in the Harriton Family Cemetery
- Morris lived Gulf Rd 1910 and
- I suspect she was member of the Harrison Family who purchased the land in 1719 and named the farm Harriton
- In the early 1900's many tenants occupied the Morris property and produced/bottled milk

1910 United States Federal Census for Wilson Barnard

← Pennsylvania > Montgomery > Lower Merion > District 0097

House No	Visited No	Family No	Name	Relation	Sex	Race	Age	Marital St	Years Ma	Children	Children	Birthplace	Father's Birthplace	Mother's Birthplace	Immigrati	Naturaliz	Speaks English	Occupation	Industry	Employ	Out of Wk	Weeks w	Can Reac	Can Write	Attended	Own or R
222	229		Julia	Wife	F	W	31	M	1	0	0	Delaware	Delaware	Delaware			English	None								
			Father, Clara	Daughter	M	W	29	S				Maryland	Maryland	Maryland			English	Chauffeur	Private family	W	10	4	Yes	Yes	Yes	
			Barnard, Wilson	Head	M	W	47	M	25			Pennsylvania	Pennsylvania	Pennsylvania			English	Widener	Comp				Yes	Yes	Yes	
			Phoebe	Wife	F	W	47	M	25	4	4	Delaware	Delaware	Delaware			English	None					Yes	Yes	Yes	
			J. Chandler	Son	M	W	24	S				Pennsylvania	Pennsylvania	Delaware			English	Clerk	Workshop	W	10	4	Yes	Yes	Yes	
			Anna	Daughter	F	W	20	S				Pennsylvania	Pennsylvania	Delaware			English	None					Yes	Yes	Yes	
			Julius W.	Son	M	W	13	S				Pennsylvania	Pennsylvania	Delaware			English	None					Yes	Yes	Yes	
			George A.	Youngest	M	W	30	S				Pennsylvania	Pennsylvania	Pennsylvania			English	Farm Hand	Farm	W	10	4	Yes	Yes	Yes	



**TO HIRE A GOOD ALL AROUND COL-
ored farm hand; house furnished;
also, 4 or 5 corn huskers, 5c. per shock
and board. WOODLEAVE FARM, Bryn
Mawr, Pa. no16n4t**

**SOME ONE TO CUT AND HUSK TWO
fields of corn at Newtown Square, also
one at Bryn Mawr, Pa.; good price, with
board over that. WOODLEAVE FARM,
Bryn Mawr, Pa. oc4n5t**

**TO HIRE A MAN WITH FAMILY TO
take charge of dairy of 30 to 40
cows; must be temperate and reliable;
good wages. WOODLEAVE FARM, Bryn
Mawr, Pa. ja6n5t**

**A MARRIED MAN TO RUN A RETAIL
milk wagon; \$50 per month, house
and privileges. WOODLEAVE FARM,
Bryn Mawr, Pa. ap4n5t**

**TO HIRE A FARM HAND BY THE
year; wages \$75 and privileges;
colored preferred; will give a man one-
third interest. Woodleave Farm, Bryn
Mawr, Box 52. mh19n7t**

**95 BEAGLE DOGS for sale, 60 thoroughly
broken; balance puppies and partly broken;
some pedigreed; several pairs always worked
together; trial alike; dogs guaranteed to be
satisfactory; come out and see them work;
trains every half-hour from Broad st. Teams
at the station every morning. Meet trains to-
day until 12.30. Devonshire Beagle Kennel,
Berwyn, Pa.**

**TO THOSE WHO HAVE BEEN TRYING TO
get suited in a good rabbit dog and have not
succeeded, can get suited by calling on or
sending to the Devonshire Kennels, Bryn Mawr,
Pa.
RABBIT HOUNDS, THIRTY THOROUGHLY**

**WANTED—TO BUY 100 THOR-
oughly broken beagle dogs, no
puppies; price from \$5 to 25, according to
quality. Mention price and particulars
in first letter.
DEVONSHIRE KENNELS,
Bryn Mawr, Pa. oc23n1w**

**WANTED TO BUY—25 beagles; will pay
from \$25 to \$100, depends on quality
and what they can do and how. Give
age, description and how good in first
letter. Devonshire Kennels, Bryn**

**DOGS boarded, sanitary kennels. Farm to
run over; hunting dogs broken; plenty of
game. Devonshire Kennels, Sellersville, Pa.**

WHEN the history of the Beagle, known among those who follow the hunts as the Merry Little Hound is written in the cyclopedia of Dogdom, the name Wilson Barnard, owner of the Devonshire Kennels, at Bryn Mawr, Pa., will appear in bold-faced type.

For let it be known that Mr. Barnard has been an ardent fancier of the Beagle Hound for the last thirty-two years. He has owned and bred some of the most typical specimens which have made history in the field and on the bench.